

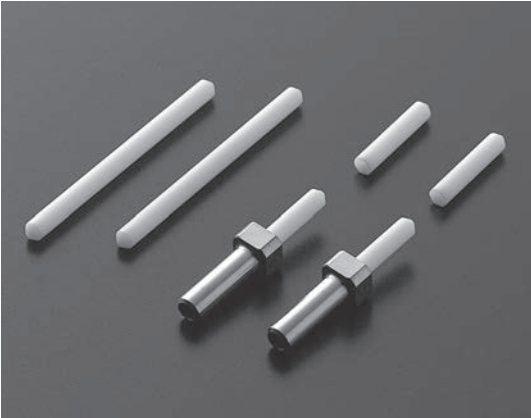
Glass-Ceramic Ferrule GCF/GCF-200S

Glass-Ceramic Ferrule GCF is suitable for single-mode optical connectors.

Durability matches or exceeds that of ceramic ferrules especially under high-temperature and high-humidity conditions.

GCF can be polished quickly without using diamond polishing film. The cost saving is substantial.

Glass-Ceramic Ferrule GCF-200S features an enhanced eccentricity of 0.2μm. This enables improved connection performance without the sacrifice of the excellent polishing properties and environmental durability of the GCF.



Features

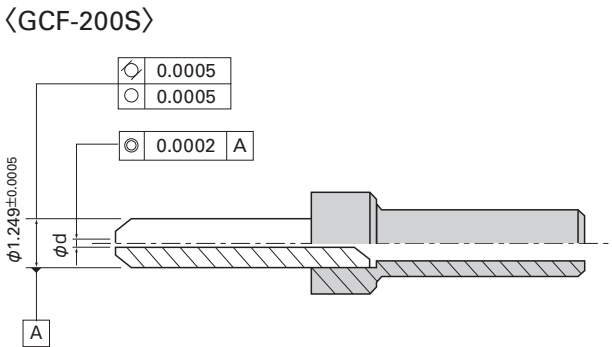
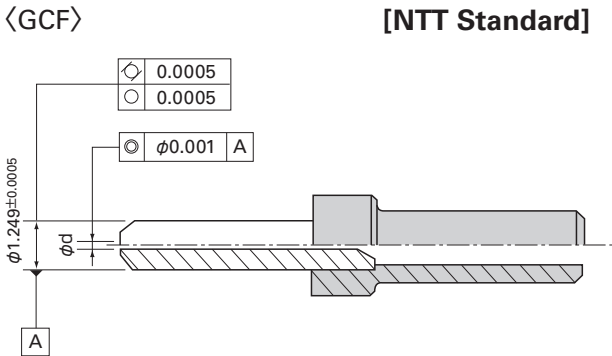
- Excellent environmental durability
- Excellent polishing properties

Outer/Inner Diameter

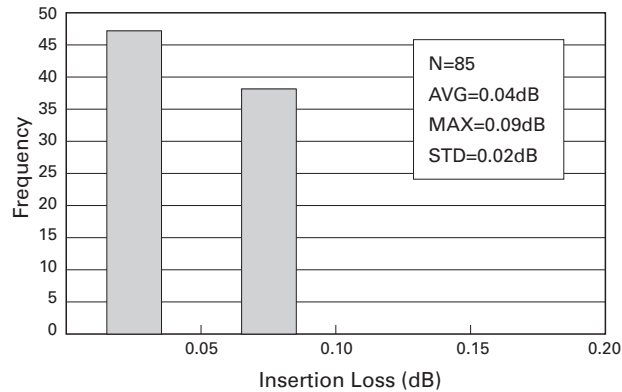
(mm)

Item	Outer dia.	Code	Inner dia. φ d	Tolerance of I.D.
Glass-Ceramic Ferrule GCF	φ 2.499	GW1250S194S	0.125	+0.001/−0
		GW1255S194S	0.1255	
		GW1260S194S	0.126	
		GW1270S194S	0.127	
	φ 1.249	GV1250SB9MS	0.125	
		GV1255SB9MS	0.1255	
Glass-Ceramic Ferrule GCF-200S	φ 1.249	GV1260SB9MS	0.126	
		GV1250HB9MS	0.125	
		GV1255HB9MS	0.1255	
		GV1260HB9MS	0.126	
		GV1270HB9MS	0.127	

Dimensions



The connection properties of GCF-200S in random connections



*These figures show that GCF-200S is applicable to a general market requirement of less than 0.3dB even though it is no-tuning.