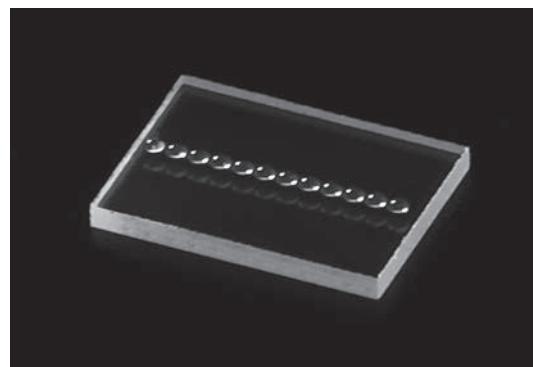
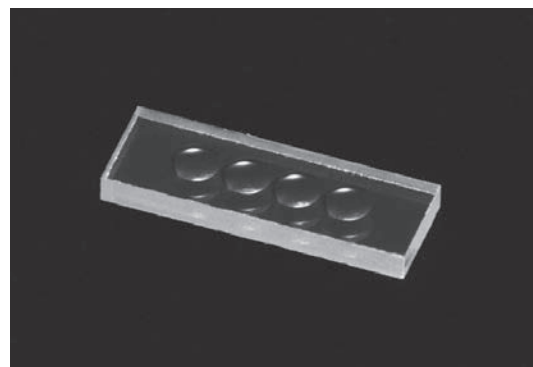


# Micro Lens Array

Micro Lens Array is made of original high refractive index optical glass using a precision molding process. Micro Lens Array can be used with optical interconnection, a 40G/100G parallel optical module, and the like.

## Features

- High accuracy through high precision molding process
- High coupling power achieved by high refractive index glass material and aspherical lens design
- High heat resistance, and corresponds to the reflow process
- Various coatings, such as AR coating and ND coating, are available



## Glass Material

Glass code	XC-1
Refractive index ( $n_d$ )	1.81

## Dimensions (example)

Standard shape	Plano-Convex
Curvature radius	R0.165mm –
Thickness of substrate	about 0.450mm
Lens height (SAG)	about 0.040mm
Pitch	0.25mm, 0.50mm, and others

Consult us regarding other specifications.