

APPLICATION OF NEG ARG FIBRE

Ref. No. 001 SEPT. 1991



NEG ARG Fibre, manufactured by Nippon Electric Glass Co., Ltd., is used throughout the world as a reinforcement for cement composites, including asbestos replacement products.

GRC-CGC Panels in Japan



A corporate dormitory for employees of a glass manufacturer was completed in Shiga Prefecture, Japan in 1990. The dormitory, named "Young House 202", has a total of 202 single-occupancy rooms, each of which has an area of 18m². In the dormitory, there are an audio-visual room (equipped with personal computers and other electronic gear) and a fitness room. A parking lot adjacent to the dormitory can accommodate up to 150 vehicles.

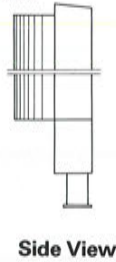
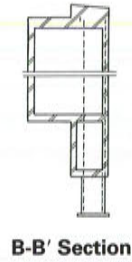
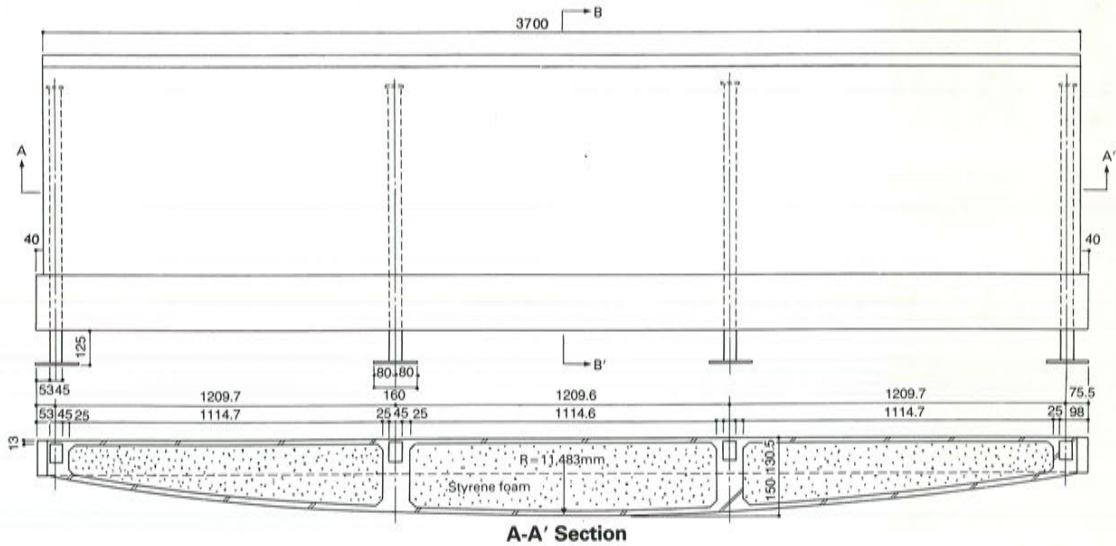
The exterior of the dormitory building is covered with 240m² GRC (glass fibre reinforced concrete) cladding panels and 1,080m² GRC balcony panels. The cladding panels consist of a steel stud frame system with an outer composite skin of 7mm-thick tile bonded onto a 13mm-thick GRC. The balcony panels are curved double-skin composites. The



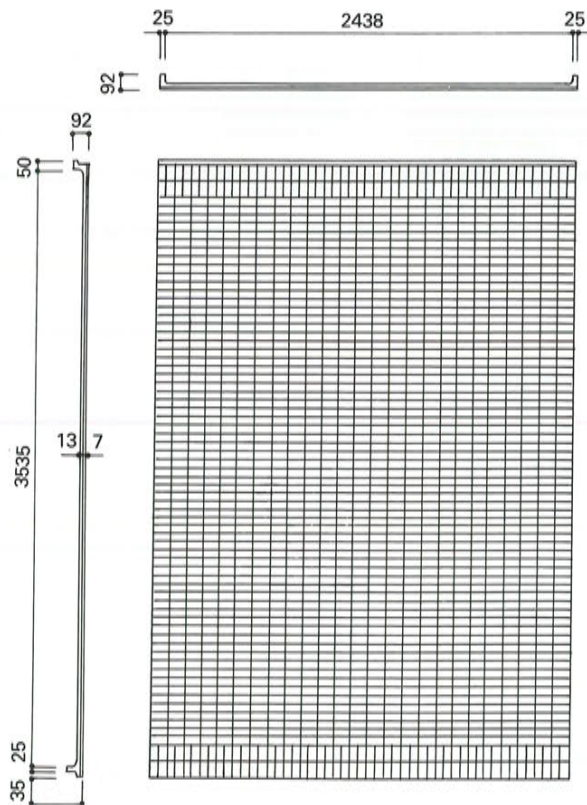
continuous wall surface made of GRC balcony, reminiscent to a resort hotel, helps avoid a monotonous design image typical of a dormitory.

Corporate Dormitory
Location: Shiga, Japan
Architect: Kajima Corporation
GRC Manufacturer: Central Glass Co., Ltd.
Date Completed: May, 1990

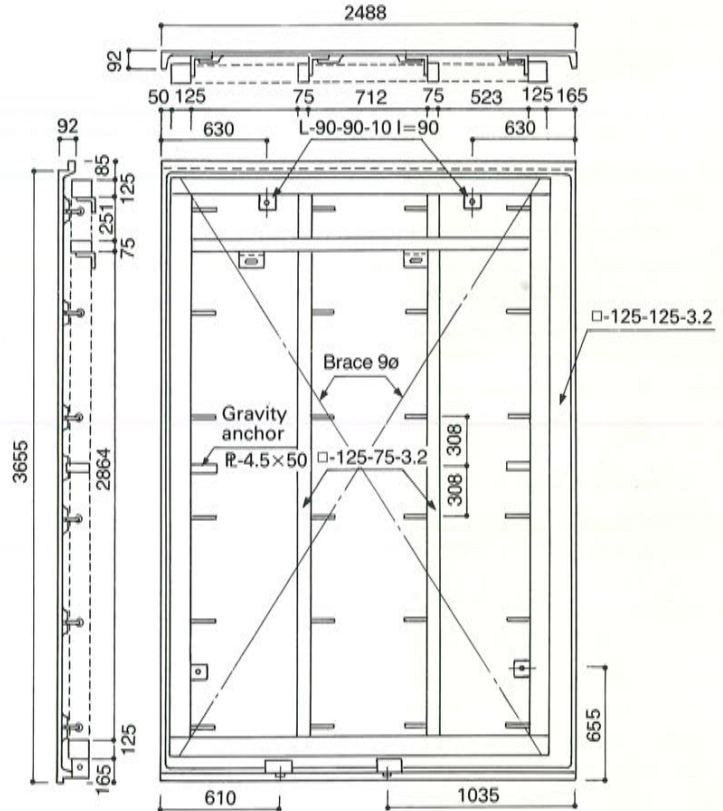
● BALCONY PANEL



● CLADDING PANEL



Elevation



Reverse Elevation



Nippon Electric Glass Co., Ltd.

1-14, Miyahara 4-chome, Yodogawa-ku, Osaka 532, Japan