

APPLICATION OF NEG ARG FIBRE

Ref. No. 006 DEC. 1991

 Nippon Electric Glass

NEG ARG Fibre, manufactured by Nippon Electric Glass Co., Ltd., is used throughout the world as a reinforcement for cement composites, including asbestos replacement products.

Okawabata J Tower and GRC



Obayashi Corporation was contracted by Mitsui Fudosan Co., Ltd. to construct a new urban high-rise condominium in the Okawabata area of Tokyo's waterfront.

The subject of this building was to fulfill the varied requirements of an urban residence. The project was to build a 31-story building with 290 residential units that would become Tokyo's new landmark condominium. As this building is for residential use, we decided to employ ceramic tile finish for flat parts and fluorocarbon resin coating finish for the four curved corner parts as the exterior materials to give the building a feeling of warmth. Because this was to be a super-high-rise building, we selected GRC architectural cladding panels as the base panel material in order to keep down the weight and reduce the time required for finishing work.

One of the special features of GRC architectural cladding panel is its versatility to be shaped freely to fit both

flat and curved surfaces. We considered it to be an appropriate material for the even and repetitive external finish of high-rise buildings. There was some initial anxiety about the possibility of deformation and ceramic tile detachment after tiles were bonded to the GRC panels. But based on the greatly enhanced performance of GRC, we decided to use it in this application.

The building, completed in September 1991, successfully retains the image desired in the original plans. It has attracted a lot of attention as a prototype for the outer appearance of this new type of high-rise condominium.

The Okawabata River City 21 redevelopment project includes five completed high-rise condominiums so far, but we are proud to say that ours is the most outstanding and attractive building.

Construction of another tower with a similar external finish design has already started in this project.

We intend to make greater use of GRC surface finishing materials and installation to create many charming buildings.

(Tadayoshi Inoue, Obayashi Corporation)

Okawabata J Tower

Location: Tokyo, Japan

Architect:

(High-rise part) Obayashi Corporation

(Low-rise part) Mitsui Construction Co., Ltd.

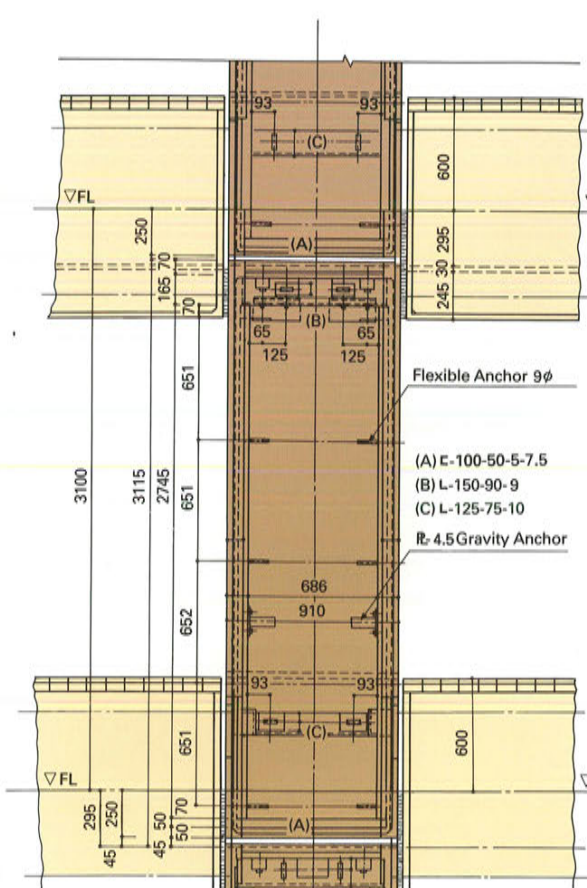
GRC Manufacturer: Central Glass Co., Ltd.

Date Completed: September, 1991

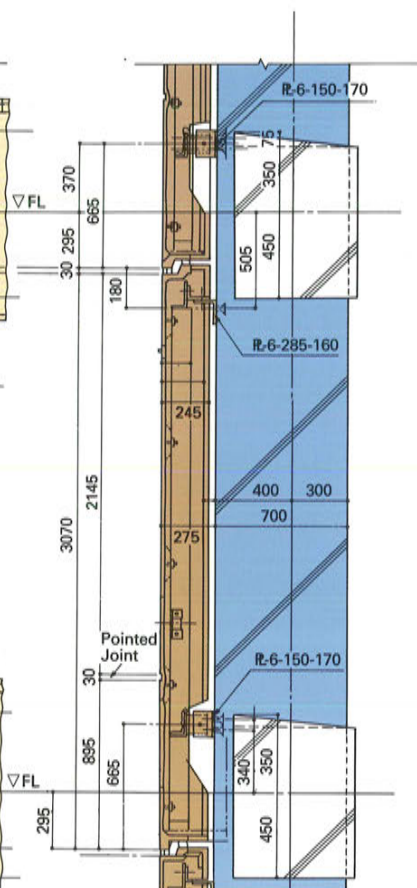


GRC Cladding Panel

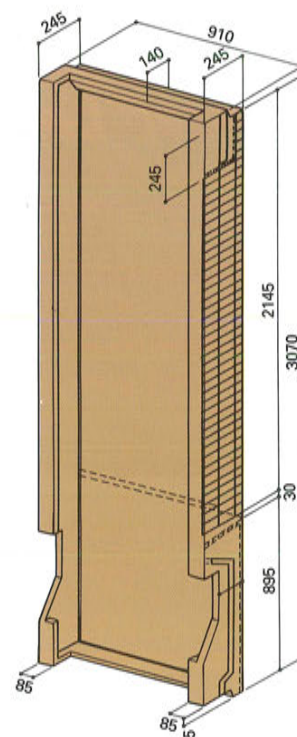
- **GRC Drawings for Column**



Rear View

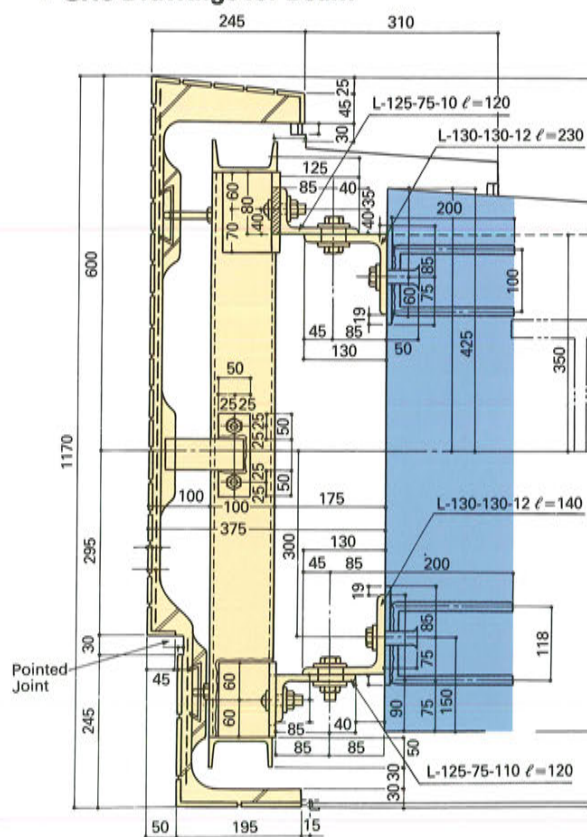


Section

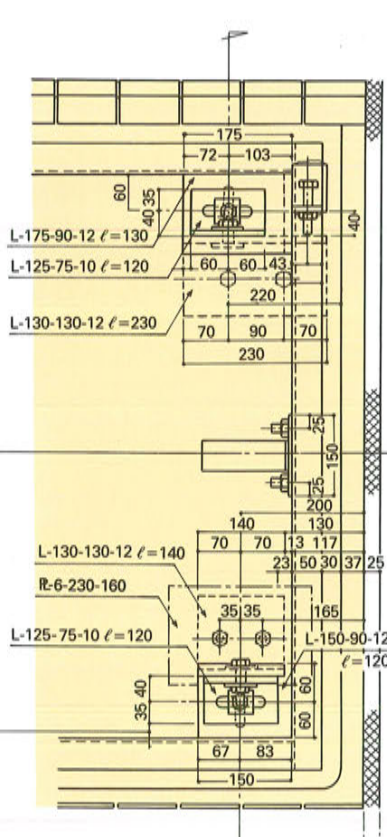


Iso. View

- **GRC Drawings for Beam**



Section



Rear View





GRC curved panel of low-rise part



View of Okawabata River City 21



Nippon Electric Glass Co., Ltd.

1-14, Miyahara 4-chome, Yodogawa-ku, Osaka 532, Japan