

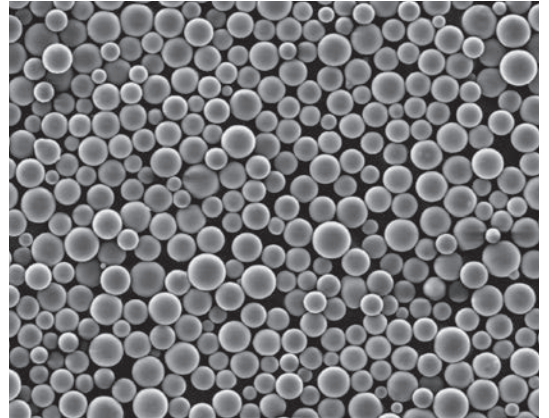
# Negative CTE Filler

The volume of the Negative CTE\* Filler becomes smaller as temperatures rise. This makes it effective for reduction of the thermal expansion of the resin composite. Its spherical shape contributes to its excellent resin filling status.

\*CTE: coefficient of thermal expansion

## Features

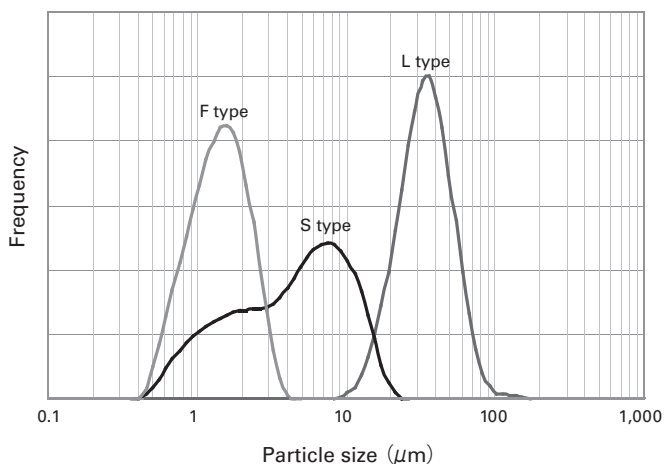
- Negative CTE
- Water resistance
- Small particle size
- Electric insulation



## Properties

Glass Code			DL-7400
Coefficient of thermal expansion	25-150°C	ppm/K	-1.1
	150-240°C		-0.9
Density		× 10 <sup>3</sup> kg/m <sup>3</sup>	2.5

## Particle Distribution



※Other sizes are also available.

## CTE of Resin Composite

